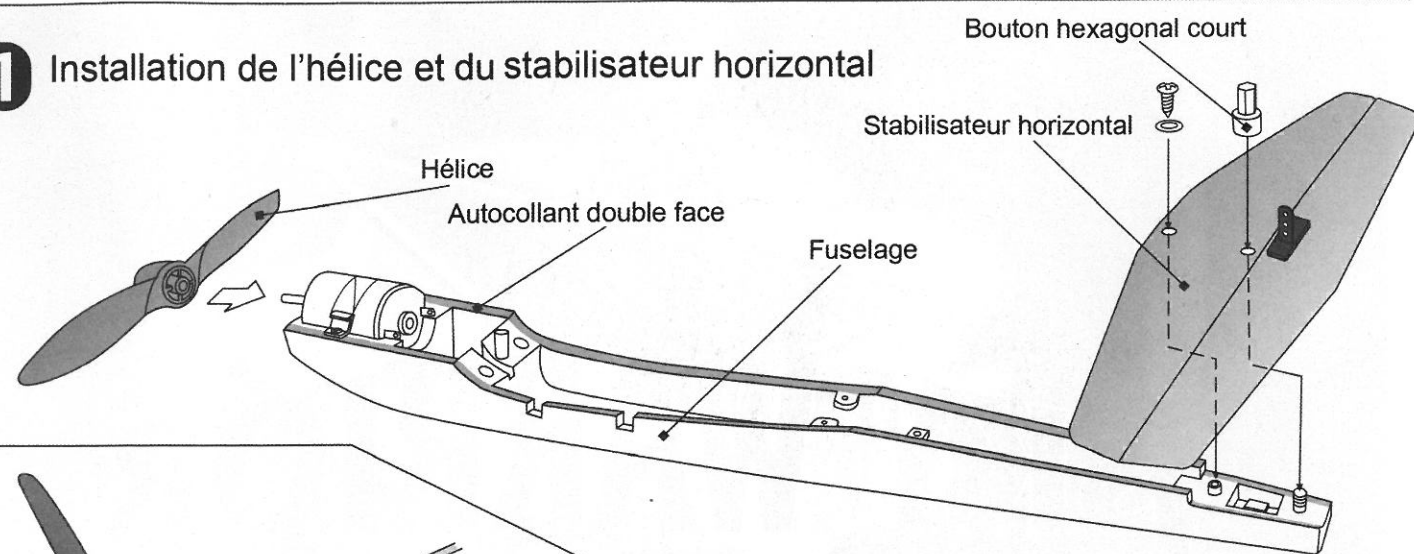
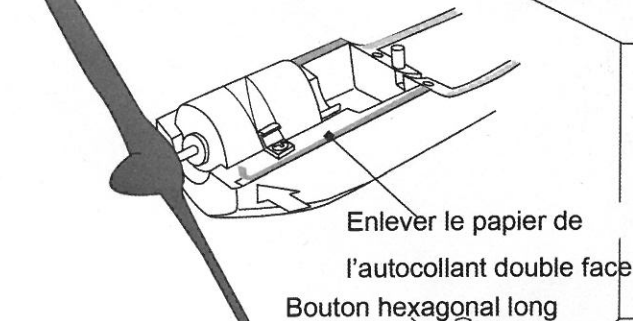


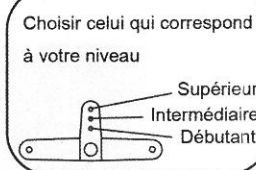
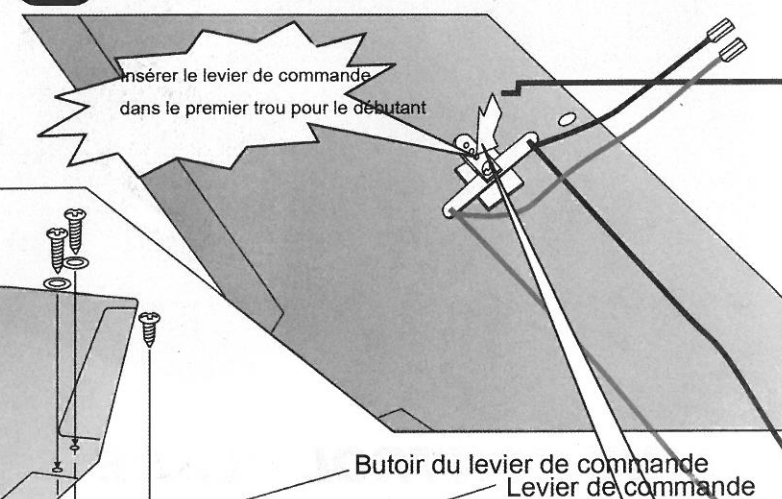
1 Installation de l'hélice et du stabilisateur horizontal



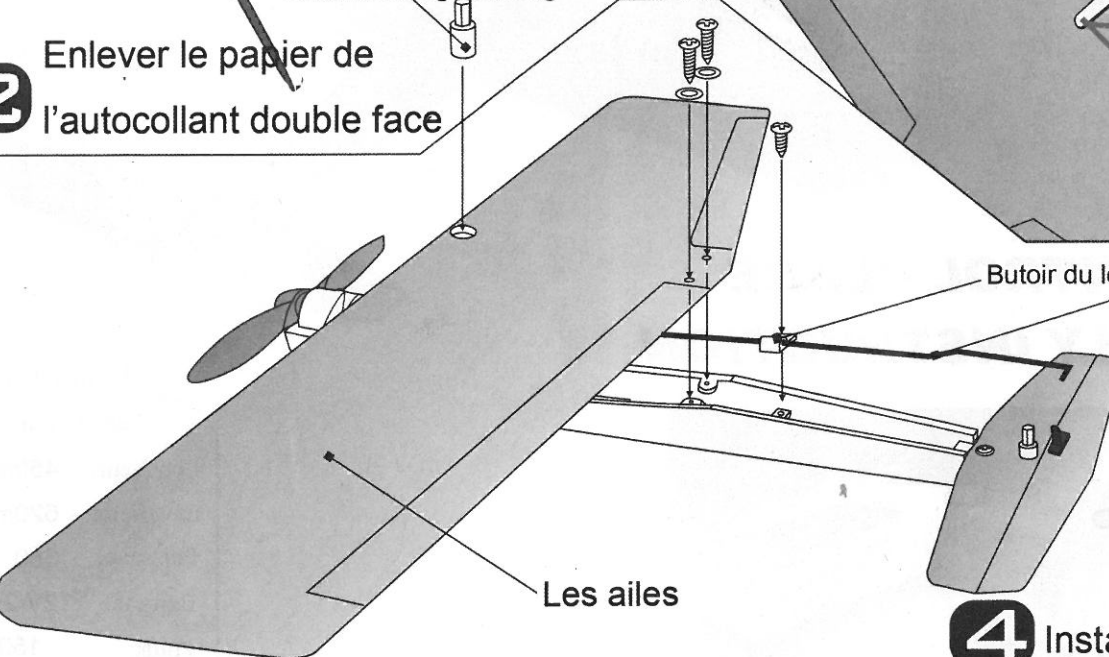
2 Enlever le papier de l'autocollant double face



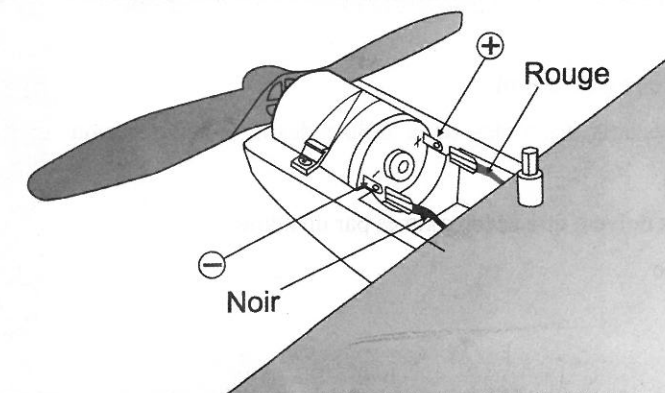
3 Liaison du levier de commande et des ailes



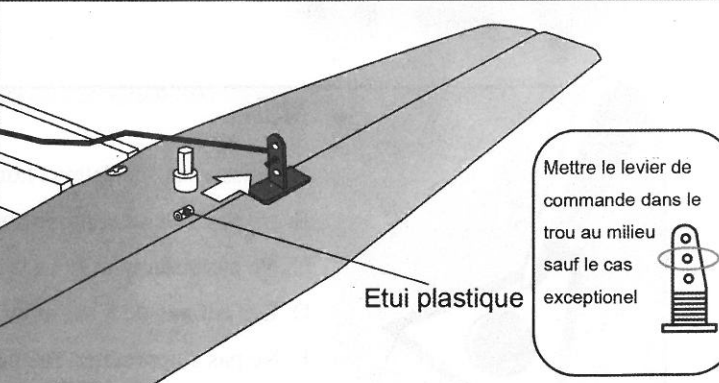
4 Installation des ailes



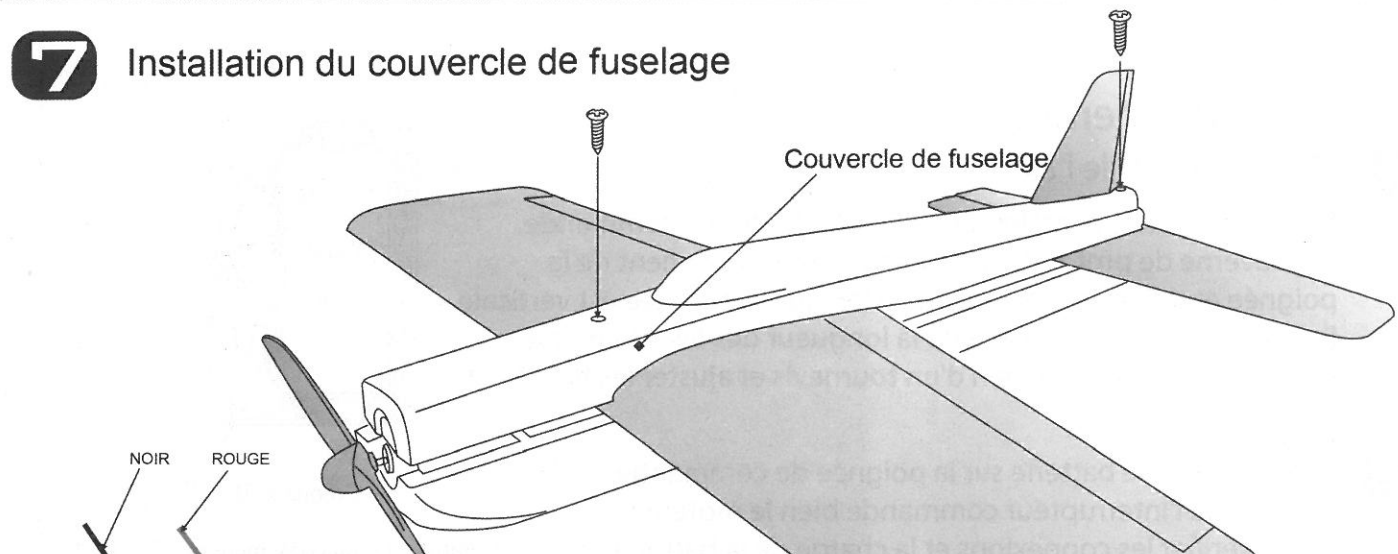
5 Liaison du moteur



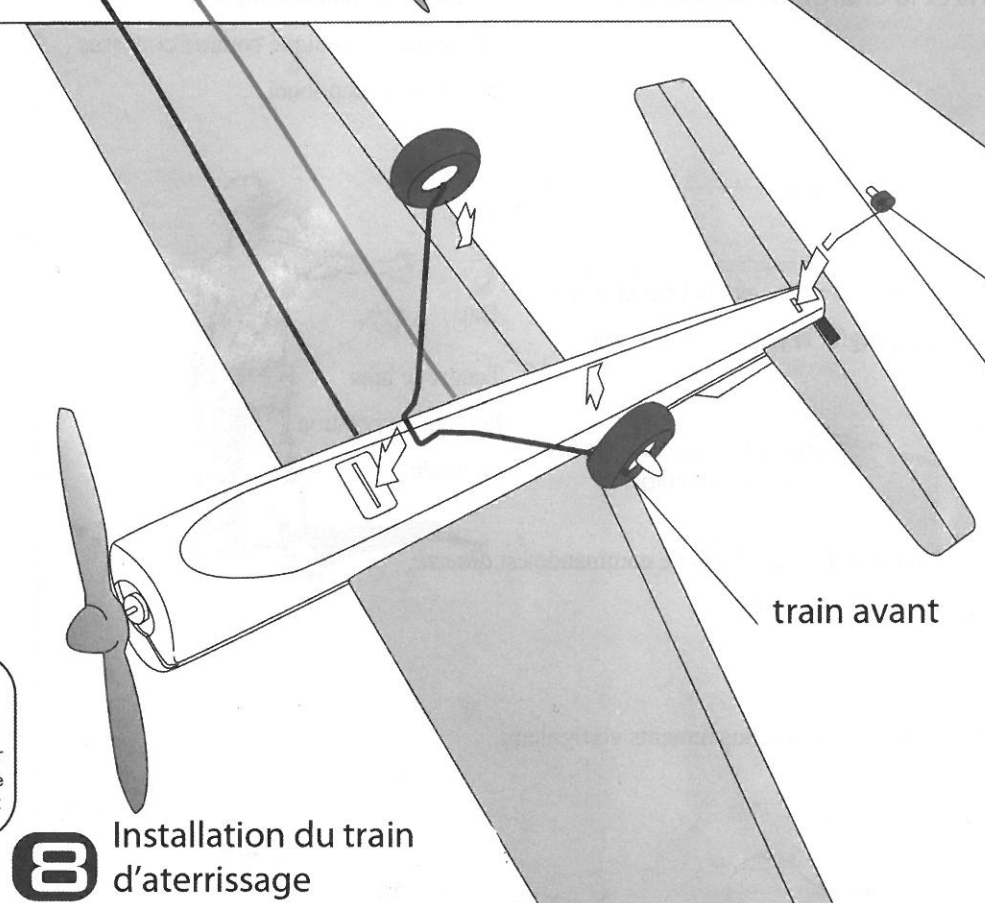
6 Liaison du levier et de l'empennage



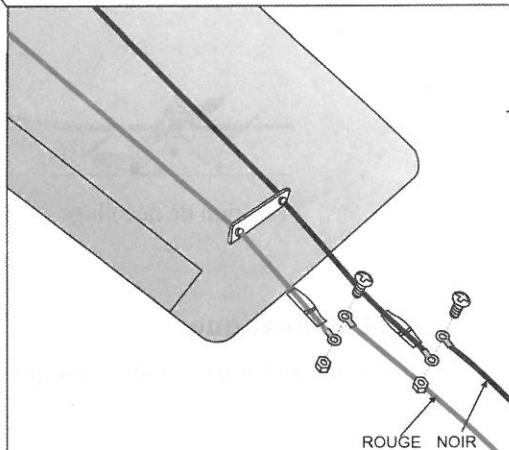
7 Installation du couvercle de fuselage



8 Installation du train d'atterrissage



9 Le raccordement des fils de commande



Autocollants décoratifs

